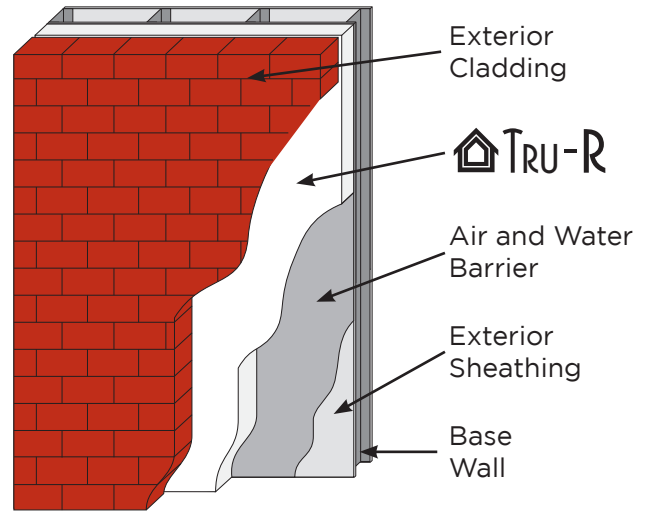


Building codes are established to provide structural, fire, and life safety requirement for all buildings. Building codes have specific requirements for materials, insulation, structural, and fire performance.

A key building code requirement is providing NFPA 285 compliant wall assemblies. Numerous assemblies which include Tru-R insulation as an insulation component have successfully passed the rigorous NFPA 285. The NFPA 285 test results along with engineering analysis by leading fire consultants provide for the use of a wide range of exterior wall designs for NFPA 285 compliant assemblies incorporating Tru-R insulation.



Wall Assemblies with Tru-R Exterior Continuous Insulation (ci)	
Base Wall Options	
<ol style="list-style-type: none"> 1. Cast Concrete Wall 2. CMU Concrete Wall 3. Steel Stud Framed Wall <ol style="list-style-type: none"> a. 25 GA. (min.) 3 5/8" (min.) steel studs spaced 24" o.c. (max.) b. Lateral Bracing Every 4 ft. vertically c. 5/8" Type X Gypsum Wallboard Interior d. Cavity Insulation <ol style="list-style-type: none"> i. None ii. Any Class A, B, or C Fiberglass batt insulation (faced or unfaced) iii. Any noncombustible insulation e. Any 1/2" (min.) Exterior Gypsum Sheathing 	
Water Resistive Barrier / Air Barrier Options Over Base Wall	
<ol style="list-style-type: none"> 1. None 2. BASF Enershield HP 3. BASF Enershield I 4. Carlisle Barritech NP 5. Carlisle Barritech VP 	<ol style="list-style-type: none"> 6. Dupont Fluid Applied WB 7. Dupont Tyvek CommercialWrap (1 or 2 layers) 8. Grace Perm-A-Barrier VPS 9. Tremco EXOAir 230
Tru-R Exterior Insulation Options	
<ol style="list-style-type: none"> 1. 10 3/4" (max.) Tru-R 100 2. 8 1/4" (max.) Tru-R 130 3. 7" (max.) Tru-R 150 4. 5 1/4" (max.) Tru-R 250 5. 4" (max.) Tru-R 400 6. 3 1/4" (max.) Tru-R 600 	

Exterior Cladding Options

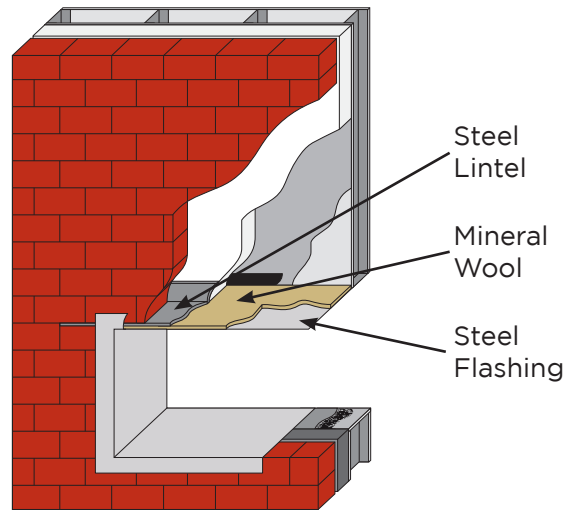
1. **Brick** - Nominal 4" clay brick or veneer with 2" (max.) air gap behind the cladding. Brick with ties/anchors 24" o.c. (max.)
2. **Concrete** - 2" (min.) with 2" (max.) air gap behind the cladding
3. **Concrete Masonry Units** - 4" (min.) with 2" (max.) air gap behind the cladding
4. **Limestone** - 2" (min.) with non-open joints installation technique such as shiplap
5. **Natural Stone Veneer** - 2" (min.) with non-open joints installation technique such as shiplap
6. **Precast Artificial Stone** - 1-1/2" (min.) complying with ICC-ES, AC 51 with non-open joint installation technique
7. **Terra Cotta Cladding** - 1-1/4" (min.) solid with non-open joint installation technique such as shiplap
8. **Stucco** - 3/4" (min.) exterior cement plaster and lath

Fire Stopping at Floor Line Options

1. Mineral wool fiber fire stop in each stud cavity at floor line. Thickness equal to stud cavity depth. Follow manufacturer instruction for installation.

Window Header Detail

1. 25 GA. (min.) sheet metal (steel) flashing with 1" thick, 4 pcf mineral wool over interior of sheet steel
2. Header design equal or better than item 1



Buffalo
(716) 874-6474

buffaloinfo@thermalfoams.com

Syracuse
(315) 699-8734

syracuseinfo@thermalfoams.com

Rochester
(585) 247-0324

buffaloinfo@thermalfoams.com

Pittsburgh
(724) 742-1200

buffaloinfo@thermalfoams.com

Albany
(518) 621-7960

syracuseinfo@thermalfoams.com

Copyright © 2020 Thermal Foams, Inc.
All rights reserved. Printed in USA.

TF49-06/20